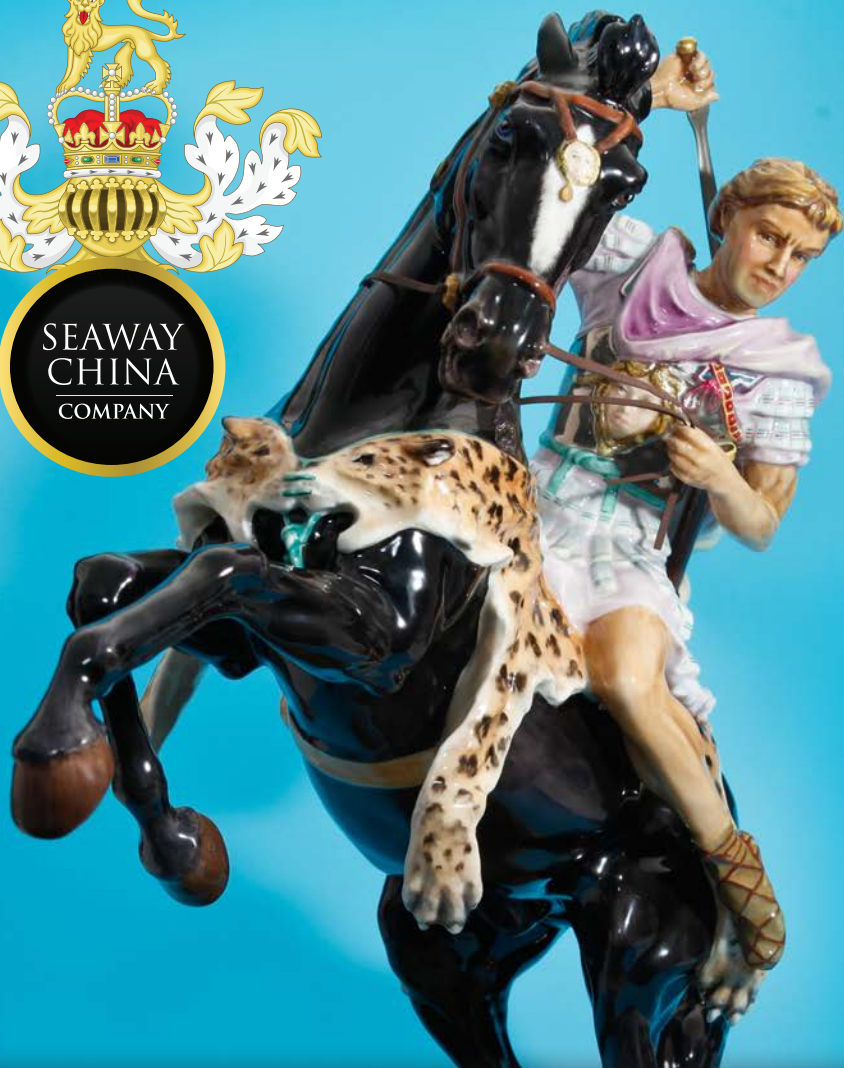




SEAWAY
CHINA
COMPANY



THE ULTIMATE CURATED COLLECTION



THE ULTIMATE CURATED COLLECTION

Within these pages you will find some of the rarest and most important pieces ever produced by the Royal Doulton Studios in Stoke-on-Trent, England. Many of these legendary pieces have never been for sale in our catalog or online.

We invite you to explore our catalog and find the next great piece of Royal Doulton to add to your collection. Whether it be a piece from the Royal Doulton archives, a Prestige Figure, a Prototype, a rare Pretty Lady, a fantastic Character Figure or a precocious Child Study, we know that whatever you choose will bring you endless pride and joy.



Alexander the Great HN4481
18"H \$32,000

"Alexander the Great" is the fourth in a series of Prestige studies of famous riders and horses, modeled by Alan Maslankowski. This is Number 20 of a planned limited edition of 50 figures, of which only two dozen were ever produced. Alexander is depicted mounted on the back of his legendary horse, 'Bucephalus.' It is the first time the Macedonian king appeared as a Royal Doulton figure.



Sentinel HN523
17.5"H \$23,000

"The Sentinel" is a Royal Doulton advertising figure, produced for the Sentinel Waggon Works of Shrewsbury, United Kingdom. It is modeled as a Medieval figurative effigy monument of a knight. Impressed date 1921.



The Return of Persephone HN31
16"H \$26,000

"The Return of Persephone" is a Charles Vyse pottery figure, a very rare early model produced in 1913 for Doulton Burslem, depicting the goddess Persephone returning to her mother, Demeter. In ancient times, the spring equinox marked the return of Persephone from the Underworld. Only two models of this figure are thought to have been produced.



A Shepherd HN81
13.25"H \$26,500

"A Shepherd" is a Royal Doulton figure designed by Charles Noke, circa 1918. It is modeled as a shepherd wearing a dark brown glazed cap and smock, supporting a lamb in one hand and a lantern in the other.



St. George
16"H \$3,500

"St George" is a Royal Doulton figure, issued from 1950 to 1979, and based on a 1915 study by Stanley Thorogood. Modeled as an armored warrior, with blonde hair in a Prince Valiant style, and superb polychrome decoration. His warhorse is painted dappled grey, and is covered in a spectacular caparison with the Three Lions emblem of England.



**Merlin
(Prototype)**
12.5"H \$8,500

This Royal Doulton Prototype figure of "Merlin" the wizard is depicted in a brightly colored hooded cloak, decorated in a purple, green, gold and brown colorway, with Celtic knots and runic sigils. He stands on a circular base, with a small red dragon – an important image in Arthurian romances – at his feet.



Robert Burns HN42
14"H \$25,000

A Royal Doulton figure designed by Ernest W. Light, "Robert Burns" was produced from 1914 to 1938. It is modeled as Scotland's national poet (1759-1796), dressed in 18th century Highland garb and leaning on a plough. This figure continues a popular 19th century tradition of figures based on Burns.



Lady Godiva HN4641
15.75"H \$20,000

"Lady Godiva" is a limited edition Royal Doulton Prestige figure, designed by Alan Maslankowski. The legendary Saxon noblewoman is depicted riding a dappled horse, seated on a flowing red saddlecloth, embroidered with golden Fleur de Lys with superb 22-carat gold gilt detailing on the saddle's pattern and horse's bridle.



Palio HN2428
17.5"H \$6,500

"The Palio" is a Royal Doulton figure designed by Peggy Davies, issued from 1971 to 1975 in a limited edition of 500. Painted in an exquisite blue, brown and black colorway, it depicts a participant in the Italian Palio event, the spectacular equestrian pageant held every summer in the ancient city of Siena, Italy.



Myfanwy Jones HN39
(Colorway)
12"H \$9,500

"Myfanwy Jones" (also recorded as "The Welsh Girl" is a Royal Doulton figure designed by Ernest W. Light, and issued from 1914 to 1936. Hand painted in a striking red, black and purple colorway, it is modeled as a young woman from Wales, dressed in traditional cloak, blouse, floral dress, and capotain, a tall stovepipe-style hat worn by women as part of the Welsh national costume.



George Washington at Prayer HN2861
12.5"H \$1,500

Royal Doulton's "General Washington at Prayer" is a limited edition of 750 figurines commemorating America's first president and founding father, who was widely admired for his unflinching leadership during the grueling winter of 1777-1778 at Valley Forge.



Sir Walter Raleigh HN1742
10.5"H \$3,000

"Sir Walter Raleigh" is a very rare historical figure designed by Leslie Harradine and issued from 1935 to 1949. Decorated in a rich green, purple and orange colorway, it is modeled as the proud royal favorite of Queen Elizabeth I. Raleigh sailed to America in 1584, returning with cotton, potatoes, and tobacco, none of which had been seen in Europe.



Heathcliff and Cathy
(Colorway)
13"H \$3,200

"Heathcliff and Cathy" was inspired by the 1847 English literature classic, "Wuthering Heights," written by Emily Brontë. This figure was produced as a limited edition and part of "The Romance of Literature" Series, produced in 1998.



Moorish Minstrel in Vellum
13.5"H \$8,500

"Moorish Minstrel in Vellum" is a Royal Doulton figure designed by Charles J. Noke. It is modeled as a musician dressed in period costume and playing a stringed instrument. Royal Doulton Vellum figures were first shown at the 1893 Chicago Exposition. Inspiration for the figures often came from popular theater motifs.



**British Soldier Stoneware
(Prototype)**
7.5"H \$3,500

This is a Royal Doulton Stoneware Prototype figure of a British Soldier, modeled by Leslie Harradine in 1912 and produced between 1914 and 1918. Presented in a brown colorway with a glaze finish, the soldier wears the uniform of an early 20th century British Army officer, holding field glasses (binoculars) in his left hand, a sabre hanging at his side.

Boy on a Crocodile HN373

5.25"H \$42,000

The Boy on a Crocodile is an extremely rare Royal Doulton figure, designed by Charles Noke in 1920. It is modeled in a brown and gold colorway, with a glazed finish. Child-modeled figures are among the most popular of the Royal Doulton studio. With fewer than half a dozen recorded, rarely does this figure appear in the marketplace.





Fairy HN1532
4"H \$3,750

"Fairy" is a Royal Doulton figure produced from 1932 to 1938. It is modeled as a fairy child sitting on a colorful mushroom amidst the flowers, painted in a yellow, purple, blue and green colorway.



Saucy Nymph Lustre Glaze
4.5"H \$750

"A Saucy Nymph" is a Royal Doulton child study issued from 1933 to 1949. Decorated in a lustrous glaze it is one of an early group of child studies, each distinctive and featuring a quotation printed under the base.



One of the Forty HN423F
2.75"H \$2,000

"One of the Forty" is a miniature Royal Doulton figure designed by Harry Tittensor, and issued from 1921 to 1938. Painted in an olive, green and yellow colorway. It is modeled as one of the Forty Thieves dressed in a turban, with his hands holding a bag of treasure. "Ali Baba and The Forty Thieves" was a traditional oriental tale adapted for the operetta "Chu Chin Chow," first performed in 1916.



Spooks HN88
7.75"H \$10,500

"Spooks" (also recorded as "Double Spooks") is a Royal Doulton double figure, adapted by Charles Noke from a single figure designed by Harry Tittensor for Doulton Burslem. Issued from 1918 to 1936, it is modeled as a pair of becloaked "spooky" goblins.



Boy with Turban HN1213
c.1934 3.75"H \$2,800

"Boy with Turban" is a Royal Doulton figure, designed by Leslie Harradine. Modeled as a seated little boy wearing a colorful turban, it reflects the early 20th century Western fascination for Middle Eastern and Asian culture, fashion, music and literature.



**Boy with Turban
HN586**
c.1923 3.75"H
\$2,250

**Boy with Turban
HN587**
c.1923 3.75"H
\$1,500





**Cassim
(Colorway)**
3"H \$3,000

"Cassim" is a Royal Doulton figure, designed by Leslie Harradine. It is modeled as a young boy wearing trousers, shirt and waistcoat with pointed hat.



**Cassim
HN1231**
c.1927 3"H
\$2,500



**Cassim
HN1232**
c.1927 3"H
\$1,500



Clarissa HN1525
10"H \$1,000

"Clarissa" is a Royal Doulton figure designed by Leslie Harradine, and issued from 1932 to 1938. It is modeled as strolling woman, holding a parasol.



Ermine Muff HN54
8.25"H \$3,000

"Lady Ermine" (also known as "Ermine Muff") is a Royal Doulton figure designed by Charles Noke, and produced from 1936 to 1938. Records indicate that only six Lady Ermine figurines were made before 1917 which makes this figure extremely rare.



The Lady Anne HN93
9.5"H \$15,000

"The Lady Anne" is a Royal Doulton figure designed by Ernest W. Light and issued from 1918 to 1938. It is modeled as a court lady dressed in a gown and head crespine of 15th century Lancastrian England, and painted in a striking blue colorway.



Pretty Lady HN302
9.5"H \$1,800

"Pretty Lady" is a figure designed by Harry Tittensor, and issued from 1918 to 1938. Painted in a rich green and lavender colorway, it is modeled as a young woman wearing a spectacular gown and a gold circlet on her head.



Pretty Lady HN70
9.5"H \$4,250

"Pretty Lady" is a Royal Doulton figure designed by Harry Tittensor, and issued from 1916 to 1938. This is a gorgeous color variation, hand painted in a lustrous grey colorway and modeled as a young woman wearing a spectacular gown, and a circlet on her head.



Pretty Lady HN565
9.5"H \$4,250

"Pretty Lady" is a Royal Doulton figure designed by Harry Tittensor, and issued from 1923 to 1938. This is a gorgeous color variation, modeled as a young woman wearing a spectacular gown.



The Boquet HN406
9.25"H \$6,250

"The Boquet" (also called "The Nosegay") is a Royal Doulton figure designed by Leslie Harradine and issued from 1926 to 1938. Decorated in a blue colorway it depicts a lady wearing a dress and shawl, admiring a bouquet of colorful flowers.



Puff and Powder HN400
6.5"H \$4,000

Modeled by Leslie Harradine, "Puff and Powder" is an extremely rare Royal Doulton Color Variation, hand painted in an unrecorded blue, black and canary yellow colorway. No others are known to exist.



Parson's Daughter HN1356
9.25"H \$1,000

"The Parson's Daughter" is a very early figure by Royal Doulton, designed by Harry Tittensor and manufactured from 1929 until 1938. Painted in multiple vibrant colors, it may have been inspired by a similarly titled painting by British artist George Romney (1734-1802).



Crinoline Lady HN650



Crinoline Lady HN653

Miniature Crinoline Ladies
c.1924 3"H \$3,500 each

"Crinoline Lady" is a Royal Doulton Miniature Figure designed by Leslie Harradine. It represents Royal Doulton's tradition of female figurines in wonderful gowns and flowing dresses, commonly known as Crinoline Figures.



Katherine HN615
5.75"H \$2,000

"Katherine" (also spelled "Katharine") is a Royal Doulton figure designed by Charles Noke and issued from 1924 to 1938. It is modeled as a court lady wearing the fashion of 16th century Elizabethan England, and painted in a striking and unusual red and green colorway.



back

Mephistopheles and Marguerite HN775
7.75"H \$2,000

"Mephistopheles & Marguerite" is a Royal Doulton double-sided figure designed by Charles Noke, and issued from 1925 to 1949. It depicts the infernal apparition Mephistopheles and the lovely Marguerite, who holds a gilt prayer book and wears an ivory dress detailed in gilt. The figure may have been inspired by the 1928 aquatint etching by the French artist Louis Icart (1880-1950), entitled "Faust: Devil and Woman."



Bather HN1238
7.75"H \$4,500

"The Bather" is a Royal Doulton Art Deco figure designed by Leslie Harradine, issued in 1927. Painted in a red and black colorway, it is modeled as a young woman wearing a bathing robe, and reflects the popularity of the 'Bathing Beauty' motif in the early 20th century.



The Bather HN1708
7.75"H \$6,500

A Royal Doulton Art Deco figure designed by Leslie Harradine, "The Bather" was introduced in 1938. Decorated in a black, red and turquoise colorway and modeled as a young woman wearing a bathing suit, it reflects the huge popularity of the 'Bathing Beauty' motif during the early 20th century.



The Bather HN687
7.75"H \$1,500

"The Bather" is a Royal Doulton Art Deco figure designed by Leslie Harradine, introduced in 1935 and withdrawn by 1924. Painted in shades of blue, it is modeled as a young woman putting on robe. Because of changes in popular tastes, this version was later produced decorated with a bathing suit.



The Bather HN774
7.25"H \$4,000

Designed by Leslie Harradine, "The Bather" is a Royal Doulton Art Deco figure introduced in 1925 and withdrawn by 1938. Painted in a blue and red colorway, it is modeled as a young woman wearing a bathing gown.



Swimmer HN1326
7.5"H \$6,500

"The Swimmer" is a Royal Doulton Art Deco figure designed by Leslie Harradine and issued from 1929 to 1938. This is probably one of the few Royal Doulton examples of the traditional 'Bathing Beauty,' a subject that was very popular with other ceramics makers of the era.



Carnival HN1260
8.25"H \$10,000

"Carnival" is a Royal Doulton figure, designed by Leslie Harradine, and issued from 1927 to 1938. Modeled as a semi-nude woman with her arms stretched behind her head and dressed in a colorful Art Nouveau period costume.



Sunshine Girl HN1344
5"H \$9,500

"Sunshine Girl" is a Royal Doulton Art Deco figure designed by Leslie Harradine, inspired by ladies' swimsuit fashions of the era. Issued from 1929 to 1938, it depicts a young woman wearing a 1920s swim suit and bathing cap, and holding a parasol.



Sunshine Girl HN1348
5"H \$9,500

A Royal Doulton Art Deco figure designed by Leslie Harradine, "Sunshine Girl" was inspired by ladies' swimsuit fashions of the era. Issued from 1929 to 1938, it depicts a young woman wearing a swim suit and bathing cap, and holding a parasol.



Celia HN1726
11.5"H \$3,000

"Celia" is a Royal Doulton Art Deco figurine designed by Leslie Harradine, and issued from 1935 to 1949. It is modeled as a semi-nude woman, holding a chemise wrapped around her. Hand painted in a pink colorway.



Dawn HN1858 (with Head Dress)
10"H \$3,000

"Dawn" is a Royal Doulton Art Deco figure produced from 1938 to 1949. The semi-nude figure is depicted embracing a seafoam green wrap. Dawn is painted in soft colors, her face finely detailed. A rare model produced with a head dress.



Columbine HN1296
6"H \$1,500

"Columbine" is a Royal Doulton figure designed by Leslie Harradine. It was produced from 1928 to 1938. It depicts Columbine, a sassy female comic servant character in the Commedia dell'Arte.



Columbine
HN1439
6"H \$1,500



Coming of Spring HN1722
12.5"H \$4,500

"Coming of Spring" is a Royal Doulton figure designed by Leslie Harradine. It was issued from 1935 to 1949, and depicts a young woman skipping through a flowered meadow with her arms upraised, holding a picnic blanket.



The Mirror HN1852
7.5"H \$5,000

"The Mirror" is a Royal Doulton figure designed by Leslie Harradine, and issued from 1938 to 1949. Painted in shades of pink, it depicts a young woman wearing a dressing gown, as she looks in her mirror and fixes her hair.



Harlequinade HN711
c.1925 7"H \$5,000

"Harlequinade" is a Royal Doulton figure designed by Leslie Harradine, inspired by the British comic theatrical genre called Harlequinade.



**Harlequinade
HN780**
c.1926 6.5"H
\$5,000

**Harlequinade
HN585**
c.1923 6.5"H
\$3,000





Folly HN1750
9.5"H \$3,000

"Folly" is a Royal Doulton figure, designed by Leslie Harradine, in production from 1936 to 1949. Modeled as a mischievous Pierrette (a female "Pierrot," or sad clown), carrying balloons and wearing a cone hat, ruffled collar and short dress.



Midinette HN1289
9"H \$5,500

"Midinette" is a Royal Doulton Art Deco figure designed by Leslie Harradine, and issued from 1928 to 1936. Painted in a spectacular purple and pink colorway, it depicts a young Parisian midinette (French for saleswoman) carrying ornately wrapped and ribboned gift boxes.



Lady Jester HN1222
7"H \$5,000

"Lady Jester" is a Royal Doulton figure designed by Leslie Harradine and issued from 1927 to 1938. It is modeled as a court jester, wearing traditional jester attire, with pom-poms at the end of tassels over the shoulder and back, and a balloon in her right hand.



Lady Jester HN1285
4.25"H \$5,000

"Lady Jester" is a Royal Doulton figure designed by Leslie Harradine and issued from 1928 to 1938. It is modeled as a seated female court jester, with her legs crossed and wearing traditional jester attire, cradling a marotte (the jester's scepter with a carved head).



Mam'selle HN659
c.1925 7"H \$5,500

"Mam'selle" is a Royal Doulton Art Deco figure designed by Leslie Harradine. The figure embodies the traditionally-depicted naughtiness of the French Mademoiselle with an early modern twist. Behind her on a tree stump sits a tiny winged cherub.



**Mam'selle
HN786**
c.1926 7"H
\$5,000





Marietta HN1341
c.1929 8"H \$1,000

"Marietta" is a Royal Doulton Art Deco figure produced between 1929 and 1938. Designed by Leslie Harradine, it is modeled as Marietta, the heroine of the 19th century comic operetta, Die Fledermaus, dressed in a striking bat costume.



**Marietta
HN1446**
c.1931
8"H \$1,500



**Marietta
HN1699**
c.1935
8"H \$2,500



The Mask HN657
c.1924 7"H \$5,000

"The Mask" is a Royal Doulton Art Deco figure designed by Leslie Harradine, inspired by the Italian Commedia dell'Arte. It depicts a female harlequin wearing traditional clown costume and head cap, holding a dress mask, and leaning against a pedestal, concealing a seated, winged cherub.



The Mask HN733
c.1925
6.75"H
\$5,000



The Mask HN785
c.1926
6.75"H
\$5,500



Pierrette HN1391
(Earthenware)
 8.5"H \$2,500

"Pierrette" is a Royal Doulton figure, designed by Leslie Harradine. Modeled as a mischievous Pierrette (a female "Pierrot," or sad clown). A Pierrot (French for "Little Peter") is a character from Commedia dell'Arte, with the personality of a sad clown in love.



Pierrette
HN644
(Bone China)
 7.25"H \$1,500



Modern Piper HN756
8.5"H \$2,500

"Modern Piper" is a Royal Doulton figure designed by Leslie Harradine, and issued from 1925 to 1938. Painted in a blue, purple and lilac colorway, it depicts a young female Pied Piper, leading the village men away. It probably was inspired by a contemporary revue of the traditional story.



**Rosamund with Dog
(Unrecorded Variation)**
7.25"H \$8,500

"Rosamund with Dog" is a Royal Doulton Art Deco figure designed by Leslie Harradine and issued from 1929 to 1937. Painted in a soft green, lavender, brown and red colorway, this is an adaption of Harradine's First Version, with the addition of the dog. It served as the model for Doulton's "Iona" (HN 1346, 1929-1937).



Scotties HN1281
5.5"H \$2,500

A Royal Doulton Art Deco figure designed by Leslie Harradine, and issued from 1928 to 1938, "Scotties" depicts a woman, sitting on a bench with her two black Scottish terriers. Splendidly hand painted in a pink colorway, the figure was produced in an era when Scotties were a popular fashion accessory.



Scotties HN1349
5.25"H \$5,000

"Scotties" is a Royal Doulton Art Deco figure designed by Leslie Harradine, and issued from 1929 to 1949. It depicts a woman sitting on a bench with her two wheaten Scottish terriers. A color variation hand painted in a blue colorway, the figure was produced in an era when Scotties were a popular fashion accessory.



Rhythm HN1903
6.75"H \$3,500

A Royal Doulton Art Deco figure, "Rhythm" was designed by Leslie Harradine and issued from 1939 to 1949. Decorated in a pink colorway, it is modeled as an elegant woman wearing an evening dress, her delicate arms outstretched, gracefully holding onto the sides of her dress, as she whirls in dance.



Bride HN1600
8.75"H \$1,500

"The Bride" is a Royal Doulton figure, designed by Leslie Harradine, and issued from 1933 to 1949. It depicts a young woman on her wedding day wearing a classic 1930s inspired wedding gown and holding a colorful bouquet of flowers.



Aileen HN1803
6"H \$1,500

A Royal Doulton figure, modeled by Leslie Harradine and produced in the 1930s. "Aileen" depicts a woman wearing a white dress and colorful shawl, seated with her legs crossed while she intertwines her necklace with her fingers.



Collinette HN1998
6.25"H \$750

"Collinette" is an exceptionally elegant Royal Doulton figure, designed by Leslie Harradine. It was only produced from 1947 to 1949, and is modeled as a woman standing in her long flowing gown accentuating her curvaceous figure.



Modena HN1846
c.1938 7.25"H \$2,000

"Modena" is a Royal Doulton figure designed by Leslie Harradine issued from 1938 to 1949. It depicts a young Spanish woman wearing a dress with exquisite bows and frills, her head covered in a mantilla, the traditional lace or silk shawl worn over the head and shoulders, popular with women in Spain.



Modena HN1845
c.1938
7.25"H
\$1,800





The Lambeth Walk HN1881
10.75"H \$4,500

"The Lambeth Walk" is a Royal Doulton figure designed by Leslie Harradine, and produced from 1938 to 1949. It is modeled as an elegant lady wearing a sundress and broad-brimmed hat. The figure is named for a hit song and popular dance of 1937.



Japanese Lady HN634
10.75"H \$7,500

"A Geisha," (also referred to as "Japanese Lady") is a Royal Doulton figure designed by Harry Tittensor and issued from 1924 to 1938. It is modeled as a traditional Japanese female entertainer wearing the formal kimono, decorated in a black and white colorway in striking patterns, a Shimada-styled Nihongami wig, and holding a similarly decorated fan.



Dunce HN6
10.5"H \$9,000

"Dunce" is an early Royal Doulton figure designed by Charles Noke and produced from 1913 to 1936. Noke modeled several child studies which were decorated in pastel colors. Only 3 are known to exist.



Darling HN1
7.75"H \$3,500

"Darling" is the first Royal Doulton figure produced in the HN Series, designed by Charles Vyse and introduced in 1913. Modeled as a young child dressed for bed, it was christened by Queen Mary during her visit to the Royal Doulton factory in April 1913.



Judge and Jury HN1264
6"H \$18,500

"Judge and Jury" is a Royal Doulton figure designed by J.G. Hughes, and produced from 1927 to 1938. This delightful figure is modeled as a child wearing the wig and ermine robes of a British judge, passing sentence on his puppy "defendant," before a "jury" of dolls in a basket.



Under the Gooseberry Bush HN49
3.5"H \$4,750

"Under the Gooseberry Bush" is a Royal Doulton figure designed by Charles J. Noke and issued from 1916 to 1938. Decorated in a lustrous green and brown colorway, it depicts a child reclining amongst flowers under a gooseberry bush.



Daisy HN1961
3.5"H \$800

"Daisy" is a Royal Doulton figure, designed by Leslie Harradine, and produced from 1941 to 1949. It depicts a curtsying young girl wearing a dress with frilly sleeves.



Ruby HN1724
5.25"H \$550

A Royal Doulton figure designed by Leslie Harradine and issued from 1935 to 1949, "Ruby" (also recorded as "The Red One") is modeled as a sweet young lady. Painted in a red and blue colorway, she wears a frilled and beribboned bonnet and dress.



The Rocking Horse HN2072

7"H \$2,000

"The Rocking Horse" is a Royal Doulton figure designed by Leslie Harradine and issued from 1951 to 1953. It is modeled as a young boy joyously sitting atop his rocking horse. "The Rocking Horse Winner," a 1949 fantasy film about a young boy who can pick horse race winners while riding his rocking horse, may have inspired the figure.



Babette HN1424

5"H \$2,250

This Art Deco Royal Doulton figure, "Babette" is finely modeled and beautifully hand painted in a yellow, green and red colorway. It was designed by Leslie Harradine and in production from 1930 to 1938.



Little Lady Make Believe HN1870
6.25"H \$925

"Little Lady Make Believe" is a Royal Doulton figure designed by Leslie Harradine and produced from 1938 to 1949. It is modeled as a seated young woman, wearing a dress, cape, and bonnet, and holding a parasol in her delicate hands. The name of the figurine was very likely inspired by the 1936 song of that name.



Maisie HN1619
6.25"H \$825

"Maisie" is a Royal Doulton figure designed by Leslie Harradine, and issued from 1934 to 1949. Painted in a red and pink colorway, it depicts a smiling, daydreaming young girl.



Margot HN1628
5.5"H \$1,000

"Margot" is a Royal Doulton figure designed by Leslie Harradine, and issued from 1926 to 1938. Painted in lovely pastel tones of blue, yellow, and pink, it depicts a young girl in a cavalier hat with ribbons in her hair, wearing a spectacularly detailed flower-pattern dress, and carrying a basket of spring flowers.



Nana HN1766
4.75"H \$525

"Nana" is a Royal Doulton child study designed by Leslie Harradine, and issued from 1936 to 1949. It is modeled as a young girl holding a fan, wearing a pink dress, and a blue hat that sits on her head at a jaunty angle.



Curly Knob HN1627
6"H \$800

A highly sought after and rare Royal Doulton figure, "Curly Knob" was designed by Leslie Harradine, and produced from 1934 to 1949. It depicts a seated young mother and baby, with a large basket of colorful flowers.



Daffy Down Dilly HN1713
8.25"H \$1,650

"Daffy Down Dilly" is a Royal Doulton figure, designed by Leslie Harradine, and produced from 1935 to 1949. It depicts a young woman carrying two baskets of colorful daffodils. The figure is hand painted in a multitude of colors, blending skirt and apron.



Dolly Vardon HN1515
8.5"H \$1,000

"Dolly Vardon" is a Royal Doulton figure designed by Leslie Harradine and produced from 1932 to 1949. Hand painted and decorated in a red and lavender colorway, the figure was inspired by a character in the Charles Dickens novel *Barnaby Rudge*.



Flower Seller's Children HN1206
8.25"H \$1,800

"The Flower Seller's Children" is a Royal Doulton figure designed by Leslie Harradine, issued from 1926 to 1949. This classic figure depicts a brother and sister huddled together selling flowers in the streets on London.



Romany Sue HN1757
9.75"H \$2,250

"Romany Sue" is a Royal Doulton figure designed by Leslie Harradine and issued from 1936 to 1949. She is modeled as a gypsy vendor, dressed in a colorful fringed shawl, apron and skirt. Her baskets are filled with fruits, vegetables and flowers.



Madonna of the Square HN1969
7"H \$1,000

"Madonna of the Square" is one of the most popular figures by acclaimed Royal Doulton designer Phoebe Stabler, produced from 1941 to 1949. Painted in a lavender colorway, it depicts a woman sitting next to a basket of colorful flowers, cradling a baby in her arms. Stabler based many of her models on early 20th century Chelsea street vendors.



Odds and Ends HN1844
7.75"H \$2,000

"Odds and Ends" is a Royal Doulton figure designed by Leslie Harradine, and issued from 1938 to 1949. Painted in an orange and green colorway, it is modeled as a woman selling bric-a-bac on the streets of Victorian London.



Newhaven Fishwife HN1480
7.75"H \$5,500

"Newhaven Fishwife" is a Royal Doulton figure designed by Harry Fenton and was produced from 1931 to 1938. The Newhaven fishwives had a reputation for their bargaining skills, and fishermen brought their catches for the fishwives to sell. Like the figurine, they wore costumes with layers of colorful petticoats, a muslin cap, and a scarf, the tassels of which are recreated on the figure. Like the figure, their fish were carried on their backs in creels.



Covent Garden HN1339
9"H \$2,500

"Covent Garden" is a Royal Doulton figure designed by Leslie Harradine and was issued from 1929 to 1938. Painted in a green and lavender colorway, it depicts a young woman wearing a hat, long skirt and apron holding a large basket of colorful flowers in one hand while balancing another on her head.



Orange Seller HN1325
7"H \$1,000

"Orange Seller" is a Royal Doulton figure designed by Leslie Harradine and issued from 1929 to 1939. Painted in a green and lavender colorway, it depicts a flirtatious fruit vendor, with one hand holding a basket of colorful oranges and the other brazenly resting on her hip.



Blossom HN1667
6.75"H \$2,500

"Blossom" was designed by Leslie Harradine and issued from 1934 to 1949. It is modeled as a seated woman, with a child standing before her, and a colorful basket of flowers to the side. Hand painted in an orange and blue colorway.



Court Shoemaker HN1755
6.75"H \$1,500

"The Court Shoemaker" is a Royal Doulton figure designed by Leslie Harradine and it was issued from 1936 to 1949. Painted in a purple, brown and green colorway, it depicts a Regency Era shoemaker in a fitting with a stylishly dressed lady of the Royal Court.



Anthea HN1669
6.5"H \$900

"Anthea" is a Royal Doulton figurine designed by Leslie Harradine and produced from 1934-1940. It depicts a lady wearing a beautiful pink dress and skirts, with a green shawl, holding a parasol in her hand.



4 O'clock HN1760
6"H \$1,800

"4 O'clock" is a Royal Doulton figurine designed by Leslie Harradine and produced from 1936-1949. It depicts a lady wearing a bonnet and dress in hand painted colors, enjoying her 4 o'clock tea.



Cynthia HN1686
5.75"H \$1,500

"Cynthia" is a Royal Doulton figure, designed by Leslie Harradine, and produced from 1935 to 1949. It depicts a seated young woman, wearing a frilly dress hand painted in pastel tones, holding a bouquet of colorful flowers.



Delicia HN1662
5.75"H \$1,000

"Delicia" is a Royal Doulton figure designed by Leslie Harradine and produced from 1934 to 1938. Hand painted, she is depicted wearing a lavender and pink dress, green hat, and yellow wrist corsage.



Eleanore HN1753
7"H \$1,200

"Eleanore" is a Royal Doulton figure designed by Leslie Harradine and produced from 1936 to 1949. She is depicted as a lady of the Stuart Period dressed in fashionable gown, skirts, and bodice.



Evelyn HN1622
6.25"H \$1,000

"Evelyn" is a Royal Doulton figure designed by Leslie Harradine, and produced from 1934 to 1940. It is modeled as an elegant lady wearing early 17th century fashion, with her parasol on her lap.



Helen HN1572
8"H \$2,500

"Helen" is a Royal Doulton figure designed by Leslie Harradine's and issued from 1933 to 1938. It was inspired by a painting by the French watercolorist Antoine Calbet (1860-1944), and depicts a young lady in frilly skirts shading herself with a parasol.



Jasmine HN1862
7.25"H \$1,000

"Jasmine" is a Royal Doulton figure designed by Leslie Harradine and issued from 1938 to 1949. It is modeled as a woman in a colorful, hand painted flowered dress, coat, and kerchiefed scarf.



June HN1947
7.25"H \$1,000

"June" is a Royal Doulton figure designed by Leslie Harradine and issued from 1940 to 1949. It is modeled as a young woman dressed in a colorful, elegant dress, wearing a spring bonnet and holding a parasol.



Pamela HN1468
7.5"H \$1,800

"Pamela" is a Royal Doulton figure designed by Leslie Harradine and issued from 1931 to 1938. Painted in a stunning blue colorway, Pamela wears a floor length ruffle dress, and cradles a bouquet of freshly picked lilacs in her arm.



Pantalettes HN1412
7.75"H \$700

"Pantalettes" is a Royal Doulton figure designed by Leslie Harradine, and issued from 1930 to 1949. Painted in a spectacular pink, blue and green colorway, she wears a bonnet decorated with flowers. The exquisite details include layers of petticoats, and her puffy pantalettes ruffled at the ankles.



Perfect Pair HN581 (Colorway)
6.75"H \$2,000

"The Perfect Pair" is a Royal Doulton Prototype Color Variation, hand painted in a green, blue, and white colorway. It was modeled by Leslie Harradine and produced from 1923 to 1938. In the early years of the HN collection, Royal Doulton pieces advertised many products, including this figure celebrating the 1923 amalgamation of The Tatler and Eve magazines.



Rosina HN1358
5.75"H \$1,000

"Rosina" is a Royal Doulton Art Deco figure designed by Leslie Harradine and issued from 1929 to 1937. Painted in a striking red colorway, it is modeled as a seated young lady, wearing a frilled and beribboned bonnet and dress, and an ermine fur-lined cape. The figure may have been inspired by Rosina Brown, a Doulton artist from 1879-1901.



Rustic Swain HN1745
5.25"H \$3,250

"The Rustic Swain" is a Royal Doulton figure designed by Leslie Harradine and issued from 1935 to 1949. It is modeled as a young man dressed in tricorn hat and 18th century apparel, seated next to and serenading his paramour with a wind recorder.



Quality Street HN1211
7.25"H \$1,000

A beautiful Royal Doulton figure, "Quality Street" is modeled as a woman wearing a stylish dress and ladies bonnet, and decorated in a red colorway. Although record of the designer remains unknown, the figure was issued from 1926 to 1936.



Reflections HN1848
5"H \$1,200

"Reflections" is a Royal Doulton figure, designed by Leslie Harradine and issued from 1938 to 1949. Decorated in a green, blue and pink colorway, it is modeled as a woman in thought, sitting with her legs crossed on a plush sofa. Although manufactured for a decade, its production was limited during World War II.



The Choice HN1959
c.1941 7.25"H \$2,500

"The Choice" is a Royal Doulton figure designed by Leslie Harradine, and issued from 1941 to 1949. It depicts a slender-waisted young woman wearing a floor-length dress, choosing from a selection of bonnets in a hatbox at her side.



The Choice HN1960
c.1941
7.25"H
\$3,500





Lisette HN1523
c.1932 5.25"H \$1,500

In the early 20th Century, Royal Doulton produced figurines inspired by fashions and couture of pre-Revolutionary France. "Lisette" was manufactured from 1932 to 1936. Designed by Leslie Harradine, Lisette is presented in exquisite colors and holds a fan like the other aristocratic ladies of the time.



Lisette
HN1524
c.1932
5.25"H \$1,500





Marguerite HN1946
8"H \$1,000

"Marguerite" is a Royal Doulton figure designed by Leslie Harradine, and issued from 1940 to 1949. Painted in a red, blue, and green colorway, it is modeled as a woman wearing a feathered bonnet and long dress, holding a bouquet of white flowers to her face. The figure was inspired by a calendar design entitled "Summer Breeze," by 20th century artist Stanislaus S. Longley.



Marianne HN2074
7.25"H \$700

"Marianne" is a Royal Doulton figure designed by Leslie Harradine, and issued from 1951 to 1953. Painted in exquisite detail in a red, blue, and black colorway, it is modeled as a woman from the Regency period, wearing a brimmed, feathered hat and high-collared, slender-waisted dress, holding a riding crop.



Memories HN1856
6"H \$1,100

"Memories" is a Royal Doulton figure designed by Leslie Harradine, and issued from 1938 to 1949. Painted in a blue, green, rose and pink colorway, it is modeled as a reclining, early 19th century lady, wearing a bonnet and slim-waisted dress, holding a book of poetry.



Meriel HN1931
7.25"H \$1,200

"Meriel" is a Royal Doulton figure designed by Leslie Harradine, and issued from 1940 to 1949. Painted in a pink and green colorway, it depicts a young woman wearing a spectacular dress with ribbons and an ornate summer bonnet.



The New Bonnet HN1728
7"H \$1,500

"The New Bonnet" is a Royal Doulton figure designed by Leslie Harradine, and issued from 1935 to 1949. Painted in a vibrant pink colorway, it is modeled as a young woman dressmaker, holding a spectacular spring bonnet with flowers.



Midsummer Noon HN1900
4.75"H \$1,500

"Midsummer Noon" is a Royal Doulton figure designed by Leslie Harradine, and issued from 1939 to 1949. Painted in a blue, rose and yellow colorway, it depicts a young woman seated on a loveseat next to a basket of colorful roses.

An Afternoon Stroll HN4957

8.75"H \$3,000

This Royal Doulton Prestige figure, modeled by Adrian Hughes was produced in 2006 in a limited edition of 150. It depicts three colorfully dressed young ladies crossing a peaceful bridge gazing at the water below.





**One of the Three Musketeers
(Prototype)**
10.75"H \$5,500

A Royal Doulton Prototype figure of "Athos," one of the main characters in the 1844 Alexandre Dumas novel "The Three Musketeers." Modeled by Robert Tabbenor in 1978, this figure was part of a Three Musketeers series that was planned but not produced. Athos – noble, handsome, and secretive – is modeled wearing the uniform of the King's Musketeers.



**Sultan Seated with Sword
(Prototype)**
7.5"H \$7,500

"Sultan Seated with Sword" is a Royal Doulton Prototype figure decorated in a lustrous blue, brown, and purple colorway. It is modeled as a Sultan reclining on his couch, preparing to clap his hands. Like other Doulton Prototype models, it is marked on the base, "Not Produced for Sale."



**Sweet Maid
(Colorway)**
7.75"H \$2,800

This beautiful variation of Royal Doulton's "Bride" figure, produced in 1951, is based on the model of "Sweet Maid" HN2092. This colorway variation has a detailed wedding dress in purple, white, and beige.



**Bride
(Prototype)**
8.25"H \$3,200

This Royal Doulton Prototype figure, produced in 1996, is modeled as a bride with striking details to her wedding dress and the colorful bouquet of roses she holds, and her coif styled into place with a rose-colored headband.



**Figure with Flamingo
(Prototype)**
9.25"H \$5,500

This Royal Doulton Prototype figure was painted by Mick Woodhouse, a Royal Doulton Prestige painter from 1956 to 2005. Painted in a spectacular blue, brown, lavender, green and pink colorway, it is modeled as a woman from the tropics admiring a young flamingo.



**Lady Carrying Birdcage and Umbrella
(Prototype)**
"H \$8,500

This Royal Doulton Prototype, designed by George H. Evans is modeled as a Victorian actress walking across a lighted stage, holding a covered birdcage and a parasol in her gloved hands. She wears a floor-length dress from 1929 to 1931, dating this piece to that era.



**Young Girl in Nightgown Holding Teddy Bear
(Prototype)**
8.5"H \$3,000

This Royal Doulton Prototype figure is a rare and unusual piece, only one or two being produced and decorated in different colorways.

HOW TO ORDER

VISIT

Our gallery is open
Monday – Friday
10:00 AM – 6:00 PM EST

TELEPHONE

Local
954-866-8042

Toll Free
800-968-2424

ORDER ONLINE

www.seawaychina.com

SEAWAY CHINA COMPANY

Located at
Gallery of Amazing Things
485 South Federal Hwy
Dania Beach, FL 33004

0817WH



SEAWAY CHINA COMPANY

Located at
Gallery of Amazing Things
485 South Federal Hwy
Dania Beach, FL 33004

800-968-2424

www.seawaychina.com